

**2005**

**Houchens Industries/KHSAA**

**Girls' Sweet 16®**

**State Basketball Tournament**

**Final Game Stats**  
**Session 2 ~ Game 1**  
**Wednesday, March 23**

**South Laurel Lady Cardinals**  
**vs.**  
**Ohio County Lady Eagles**



**March 23-26**  
**Diddle Arena**  
**Bowling Green**

# 2005 HOUCHENS INDUSTIRES/KHSAA GIRLS' SWEET 16 - Game Box Score

## South Laurel Cardinals vs. Ohio County Lady Eagles

Date: 03/23/2005 Time: 6:30 pm CST Site: Diddle Arena-Bowling Green, KY Attendance: N

### Visitors: Ohio County Lady Eagles

##	Name	P	FG	3 Pt	FT	PTS	ORB	DRB	TR	PF	AST	TO	BS	ST	MIN
3	Amy Hamilton		0/0	0/0	0/0	0	0	1	1	0	0	0	0	0	0:13
11	* Erin Adams		4/8	0/0	0/0	8	3	4	7	2	0	2	0	4	21:26
15	* Lauren Goff		2/9	2/6	0/0	6	0	2	2	2	2	3	0	1	27:44
20	* Amanda Critchelow		2/11	0/3	1/2	5	0	1	1	3	1	2	0	1	23:04
21	Samantha Schroader		0/2	0/0	0/1	0	0	2	2	0	0	0	0	2	13:14
22	* Kirsten McDaniel		2/8	1/5	0/2	5	0	3	3	1	3	2	0	1	24:01
23	Jesika Whittaker		0/0	0/0	0/0	0	0	0	0	0	0	0	0	0	0:13
31	Jensen Keown														DNP
35	Keshia Hunt		0/0	0/0	0/0	0	0	0	0	1	0	1	0	0	4:39
40	Ashley Payton		0/3	0/2	0/0	0	1	0	1	0	0	0	0	0	7:44
41	Lindsey Embry		0/0	0/0	0/0	0	0	1	1	3	1	3	0	0	8:07
43	* Julie Leach		8/16	0/2	12/15	28	3	4	7	2	2	7	0	0	29:22
44	Janna Whittaker		0/0	0/0	0/0	0	0	0	0	0	0	0	0	0	0:13
5	Courtney Albin														DNP
53	Kirsten Barnwell														DNP
	Team						7	3	10						
	<b>Totals</b>		<b>18/57</b>	<b>3/18</b>	<b>13/20</b>	<b>52</b>	<b>14</b>	<b>21</b>	<b>35</b>	<b>14</b>	<b>9</b>	<b>20</b>	<b>0</b>	<b>9</b>	<b>160</b>
	<b>Total FG</b>		1st Half	9/25	36.0%	2nd Half	9/32	28.1%	Game	18/57	31.6%				
	<b>3 PT FG</b>		1st Half	2/10	20.0%	2nd Half	1/8	12.5%	Game	3/18	16.7%				
	<b>Free Throws</b>		1st Half	6/9	66.7%	2nd Half	7/11	63.6%	Game	13/20	65.0%				

### Home: South Laurel Cardinals

##	Name	P	FG	3 Pt	FT	PTS	ORB	DRB	TR	PF	AST	TO	BS	ST	MIN
4	* Whitney Smith		2/7	0/1	0/0	4	0	1	1	0	1	2	0	0	25:52
10	* Mallory Jones		1/5	0/2	3/4	5	0	1	1	4	9	6	0	0	27:36
12	Makenzie McWhorter														DNP
20	Lauren Wombles		5/7	0/0	0/1	10	1	2	3	1	1	1	0	0	18:07
21	Jamie Wyatt														DNP
22	Johnna Sizemore		0/0	0/0	0/0	0	0	0	0	0	0	0	0	0	0:28
23	* Taran Johnson		8/13	0/1	4/5	20	1	10	11	2	1	2	2	1	31:38
32	Devon Burchette		1/3	0/0	0/0	2	2	4	6	3	0	3	0	1	14:52
35	Kayla Valentine		0/0	0/0	0/0	0	0	0	0	0	0	0	0	0	0:22
40	* Amber Neace		7/12	0/0	0/3	14	1	6	7	4	3	6	1	1	26:43
43	Kayla Baker														DNP
54	* Brittany Turner		2/3	0/0	2/2	6	1	4	5	5	0	4	2	1	14:22
	Team						1	2	3						
	<b>Totals</b>		<b>26/50</b>	<b>0/4</b>	<b>9/15</b>	<b>61</b>	<b>7</b>	<b>30</b>	<b>37</b>	<b>19</b>	<b>15</b>	<b>24</b>	<b>5</b>	<b>4</b>	<b>160</b>
	<b>Total FG</b>		1st Half	14/30	46.7%	2nd Half	12/20	60.0%	Game	26/50	52.0%				
	<b>3 PT FG</b>		1st Half	0/4	0.00%	2nd Half	0/0	0.00%	Game	0/4	0.00%				
	<b>Free Throws</b>		1st Half	1/2	50.0%	2nd Half	8/13	61.5%	Game	9/15	60.0%				

	OHIO	SL		OHIO	SL		OHIO	SL
Free Throw Pts	13	9	3Pt Points	9	0	Pts/Possession	0.72	0.82
Pts off Turnovers	21	11	2nd Chance Points	11	4	Pts off Bench	0	12
Total Rebounds	35	37	Team Rebounds	10	3	Dead Ball Reb	3	1
Off Rebound %	31.8	25.0	Def Rebound %	75.0	68.2	Total Rebound %	48.6	51.4
Technical Fouls	OHIO	None						
	SL	None						
Officials	Sherianne Shuey, Kirk Hudson, Linda Strong							

	Qtr 1	Qtr 2	Qtr 3	Qtr 4	OT 1	OT 2	OT 3	OT 4	Total
Ohio County Lady Eagles	9	17	11	15	0	0	0	0	52
South Laurel Cardinals	15	14	14	18	0	0	0	0	61

2005 HOUCHENS INDUSTRIES/KHSAA GIRLS' SWEET 16 - Play by Play Report - Period: 1 (pg 1)

South Laurel Cardinals vs. Ohio County Lady Eagles

Date: 03/23/2005 Time: 6:30 pm CST Site: Diddle Arena-Bowling Green, KY Attendance: N

Name	Action	Action	Score	Clock	Diff	Name	Action	Action
4 W Smith	Start Game					11 E Adams	Start Game	
10 M Jones	Start Game					15 L Goff	Start Game	
23 T Johnson	Start Game					20 A Critchelow	Start Game	
40 A Neace	Start Game					22 K McDaniel	Start Game	
54 B Turner	Start Game					43 J Leach	Start Game	
A Neace	Jump Ball Win			1 7:59		J Leach	Jump Ball Loss	
M Jones	Turnover	(Bad Pass)		1 7:51				
M Jones	Personal Foul			1 7:44				
				1 7:37		J Leach	Turnover	(Fumble)
A Neace	FG Attempt			1 7:32		E Adams	Def Rebound	
				1 7:19		E Adams	Turnover	(Bad Pass)
B Turner	Steal			1 7:19				
W Smith	FG Attempt			1 7:14		L Goff	Def Rebound	
B Turner	Def Rebound			1 7:06		A Critchelow	FG Attempt	
T Johnson	FG Made	W Smith Assist	2-0	1 6:55	+2			
B Turner	Personal Foul			1 6:41				
				1 6:41		J Leach	FT Attempt	OHIO Deadball Reb
			2-1	1 6:41	+1	J Leach	FT Made	
B Turner	Turnover	(Bad Pass)		1 6:39				
				1 6:38		E Adams	Steal	
T Johnson	Def Rebound			1 6:33		J Leach	3Pt Attempt	
A Neace	FG Made		4-1	1 6:24	+3			
				1 6:09		J Leach	Turnover	(Traveling)
B Turner	Turnover	(Bad Pass)		1 5:57				
B Turner	Personal Foul			1 5:46				
D Burchette	Enter Game	for B Turner		1 5:46				
			4-2	1 5:46	+2	J Leach	FT Made	
			4-3	1 5:46	+1	J Leach	FT Made	
M Jones	FG Attempt	A Neace Off Reb		1 5:38				
A Neace	Turnover			1 5:35				
				1 5:35		E Adams	Steal	
D Burchette	Def Rebound			1 5:22		K McDaniel	FG Attempt	
				1 5:17		A Critchelow	Personal Foul	
M Jones	Layup Made		6-3	1 5:14	+3			
				1 5:06		E Adams	Turnover	(Bad Pass)
A Neace	FG Made		8-3	1 4:58	+5			
				1 4:45		J Leach	Turnover	
				1 4:42		L Goff	Leave Game	
				1 4:42		A Critchelow	Leave Game	
				1 4:42		S Schroader	Enter Game	for K McDaniel
				1 4:42		K Hunt	Enter game	
				1 4:42		L Embry	Enter game	
W Smith	FG Attempt			1 4:34		E Adams	Def Rebound	
T Johnson	Def Rebound			1 4:23		S Schroader	FG Attempt	
T Johnson	Offensive Foul			1 4:10				
T Johnson	Turnover			1 4:10				
				1 4:10		L Embry	Charge Taken	
L Wombles	Enter Game	for A Neace		1 4:10				
				1 4:10		E Adams	Leave Game	
				1 4:10		L Goff	Enter Game	for K Hunt
				1 4:10		A Payton	Enter game	
			8-5	1 3:46	+3	J Leach	FG Made	L Embry Assist
D Burchette	Turnover	(Traveling)		1 3:35				
				1 3:08		L Embry	Turnover	
D Burchette	Steal			1 3:08				
D Burchette	FG Attempt	D Burchette Off Reb		1 3:01				
D Burchette	Putback Att			1 3:00		L Goff	Def Rebound	
				1 2:43		L Goff	3Pt Attempt	OHIO Off Reb
	Official Time Out			1 2:41			Official Time Out	
A Neace	Enter Game	for W Smith		1 2:41				
				1 2:41		A Payton	Leave Game	

2005 HOUCHENS INDUSTIRES/KHSAA GIRLS' SWEET 16 - Play by Play Report - Period: 1 (pg 2)

South Laurel Cardinals vs. Ohio County Lady Eagles

Date: 03/23/2005 Time: 6:30 pm CST Site: Diddle Arena-Bowling Green, KY Attendance: N

Name	Action	Action	Score	Clock	Diff	Name	Action	Action
				1 2:41		A Critchelow	Enter Game	for L Embry
				1 2:41		K McDaniel	Enter game	
L Wombles	Def Rebound			1 2:19		K McDaniel	3Pt Attempt	
M Jones	3Pt Attempt			1 2:04		K McDaniel	Def Rebound	
				1 1:48		L Goff	3Pt Attempt	J Leach Off Reb
			8-7	1 1:45	+1	J Leach	Putback Made	
L Wombles	Turnover	(Fumble)		1 1:36				
				1 1:35		L Goff	Steal	
				1 1:28		L Goff	Turnover	
A Neace	Steal			1 1:27				
A Neace	Layup Made	M Jones Assist	10-7	1 1:23	+3			
				1 1:10		E Adams	Enter Game	for J Leach
W Smith	Enter Game	for L Wombles		1 1:10				
D Burchette	Def Rebound			1 1:04		A Critchelow	3Pt Attempt	
W Smith	FG Made	A Neace Assist	12-7	1 0:55	+5			
				1 0:43		A Critchelow	3Pt Attempt	OHIO Off Reb
				1 0:40		J Leach	Enter Game	for S Schroader
L Wombles	Enter Game	for M Jones		1 0:40				
A Neace	Def Rebound			1 0:29		A Critchelow	FG Attempt	
T Johnson	Layup Made		14-7	1 0:22	+7			
T Johnson	FT Made		15-7	1 0:22	+8	L Goff	Personal Foul	
				1 0:22		A Payton	Enter Game	for A Critchelow
K Valentine	Enter Game	for T Johnson		1 0:22				
			15-9	1 0:02	+6	J Leach	FG Made	

End of Period Summary Cardinals 15 Lady Eagles 9

Largest Lead: Cardinals 15 Lady Eagles 7 (8 pts)

Lead in Period: Cardinals 15 Lady Eagles 7 (8 pts)

7 for 4 oppo pts

2 for 0 pts

7/14 for 50.0 %

1/1 for 100 %

Turnovers

2nd Chances

Field Goals

Free Throws

Lead Changes: 0 Ties: 0

Lead Changes: 0 Ties: 0 (this period)

7 for 4 oppo pts

3 for 2 pts

3/13 for 23.1 %

3/4 for 75.0 %

2005 HOUCHENS INDUSTRIES/KHSAA GIRLS' SWEET 16 - Play by Play Report - Period: 2 (pg 1)

South Laurel Cardinals vs. Ohio County Lady Eagles

Date: 03/23/2005 Time: 6:30 pm CST Site: Diddle Arena-Bowling Green, KY Attendance: N

Name	Action	Action	Score	Clock	Diff	Name	Action	Action
				2 8:00		A Critchelov	Enter Game	for A Payton
L Wombles	Leave Game			2 8:00				
M Jones	Enter Game	for K Valentine		2 8:00				
T Johnson	Enter game			2 8:00				
D Burchette	Personal Foul		15-10	2 7:44	+5	J Leach	FT Made	
T Johnson	Def Rebound			2 7:44		J Leach	FT Attempt	
D Burchette	Layup Made	A Neace Assist	17-10	2 7:36	+7			
D Burchette	Def Rebound			2 7:26		J Leach	FG Attempt	
M Jones	FG Attempt	D Burchette Off Reb		2 7:16				
W Smith	3Pt Attempt	T Johnson Off Reb		2 7:10				
T Johnson	FG Attempt			2 7:06		E Adams	Def Rebound	
				2 7:01		L Goff	Turnover	(Double Dribble)
				2 7:01		S Schroader	Enter Game	for K McDaniel
A Neace	FG Attempt			2 6:56		A Critchelov	Def Rebound	
				2 6:52		A Critchelov	Turnover	(Traveling)
A Neace	Turnover	(Bad Pass)		2 6:48				
				2 6:47		S Schroader	Steal	
				2 6:33		S Schroader	FG Attempt	OHIO Off Reb
				2 6:06		J Leach	Turnover	(Traveling)
M Jones	3Pt Attempt			2 5:53		S Schroader	Def Rebound	
T Johnson	Def Rebound			2 5:44		A Critchelov	FG Attempt	
T Johnson	3Pt Attempt			2 5:33		E Adams	Def Rebound	
A Neace	Def Rebound			2 5:21		L Goff	FG Attempt	
				2 5:20		L Goff	Personal Foul	
L Wombles	Enter Game	for D Burchette		2 5:20				
				2 5:20		L Embry	Enter Game	for J Leach
				2 5:20		K Hunt	Enter Game	for L Goff
				2 5:15		L Embry	Personal Foul	
A Neace	Turnover	(Bad Pass)		2 4:56				
				2 4:55		S Schroader	Steal	
				2 4:55		OHIO	Partial Time Out	
				2 4:55		S Schroader	Leave Game	
				2 4:55		K Hunt	Leave Game	
				2 4:55		L Goff	Enter Game	for L Embry
				2 4:55		K McDaniel	Enter game	
				2 4:55		J Leach	Enter game	
			17-12	2 4:48	+5	E Adams	FG Made	K McDaniel Assist
W Smith	FG Attempt	SL Off Reb		2 4:39				
T Johnson	FG Made	M Jones Assist	19-12	2 4:34	+7			
			19-14	2 4:21	+5	E Adams	FG Made	L Goff Assist
L Wombles	Layup Made	M Jones Assist	21-14	2 4:14	+7			
				2 3:59		J Leach	Turnover	
D Burchette	Enter Game	for A Neace		2 3:59				
L Wombles	Layup Made	M Jones Assist	23-14	2 3:49	+9			
T Johnson	Def Rebound			2 3:38		L Goff	3Pt Attempt	
D Burchette	Turnover	(Fumble)		2 3:30				
			23-17	2 2:54	+6	K McDaniel	3Pt Made	
W Smith	Turnover	(Bad Pass)		2 2:46				
				2 2:46		E Adams	Steal	
M Jones	Personal Foul			2 2:42				
	Official Time Out			2 2:42			Official Time Out	
A Neace	Enter Game	for M Jones		2 2:42				
D Burchette	Personal Foul			2 2:37				
				2 2:37		K Hunt	Enter Game	for L Goff
			23-18	2 2:37	+5	J Leach	FT Made	
			23-19	2 2:37	+4	J Leach	FT Made	
				2 2:37		A Critchelov	Leave Game	
				2 2:37		S Schroader	Enter Game	for K McDaniel
				2 2:37		L Embry	Enter game	
L Wombles	FG Attempt	L Wombles Off Reb		2 2:29				
L Wombles	FG Made		25-19	2 2:28	+6			

2005 HOUCHENS INDUSTIRES/KHSAA GIRLS' SWEET 16 - Play by Play Report - Period: 2 (pg 2)

South Laurel Cardinals vs. Ohio County Lady Eagles

Date: 03/23/2005 Time: 6:30 pm CST Site: Diddle Arena-Bowling Green, KY Attendance: N

Name	Action	Action	Score	Clock	Diff	Name	Action	Action
				2 2:28		L Embry	Personal Foul	
				2 2:28		E Adams	Leave Game	
				2 2:28		K Hunt	Leave Game	
				2 2:28		L Goff	Enter Game	for L Embry
				2 2:28		K McDaniel	Enter game	
				2 2:28		A Payton	Enter game	
L Wombles	FT Attempt			2 2:28		K McDaniel	Def Rebound	
				2 2:10		K McDaniel	Turnover	
W Smith	FG Attempt			2 2:07		S Schroeder	Def Rebound	
				2 1:55		A Payton	3Pt Attempt	J Leach Off Reb
			25-21	2 1:52	+4	J Leach	Putback Made	
W Smith	Turnover	(Traveling)		2 1:41				
T Johnson	Personal Foul			2 1:22				
T Johnson	Def Rebound			2 1:22		S Schroeder	FT Attempt	
A Neace	Turnover	(Bad Pass)		2 1:08				
				2 1:07		K McDaniel	Steal	
			25-24	2 1:03	+1	L Goff	3Pt Made	K McDaniel Assist
T Johnson	FG Made		27-24	2 0:41	+3			
			27-26	2 0:14	+1	K McDaniel	FG Made	
A Neace	FG Made		29-26	2 0:01	+3			

End of Period Summary Cardinals 29 Lady Eagles 26

Largest Lead: Cardinals 23 Lady Eagles 14 (9 pts)

Lead in Period: Cardinals 23 Lady Eagles 14 (9 pts)

6 for 10 oppo pts

4 for 2 pts

7/16 for 43.8 %

0/1 for 0.00 %

Turnovers

2nd Chances

Field Goals

Free Throws

Lead Changes: 0 Ties: 0

Lead Changes: 0 Ties: 0 (this period)

5 for 2 oppo pts

2 for 2 pts

6/12 for 50.0 %

3/5 for 60.0 %

2005 HOUCHEMS INDUSTRIES/KHSAA GIRLS' SWEET 16 - Game Box Score

South Laurel Cardinals vs. Ohio County Lady Eagles

Date: 03/23/2005 Time: 6:30 pm CST Site: Diddle Arena-Bowling Green, KY Attendance: N

Visitors: Ohio County Lady Eagles

##	Name	P	FG	3 Pt	FT	PTS	ORB	DRB	TR	PF	AST	TO	BS	ST	MIN
3	Amy Hamilton														DNP
11	* Erin Adams		2/2	0/0	0/0	4	0	4	4	0	0	2	0	3	10:32
15	* Lauren Goff		1/5	1/4	0/0	3	0	2	2	2	1	2	0	1	14:54
20	* Amanda Critchelow		0/5	0/2	0/0	0	0	1	1	1	0	1	0	0	11:00
21	Samantha Schroader		0/2	0/0	0/1	0	0	2	2	0	0	0	0	2	8:45
22	* Kirsten McDaniel		2/4	1/2	0/0	5	0	2	2	0	2	1	0	1	11:44
23	Jesika Whittaker														DNP
31	Jensen Keown														DNP
35	Keshia Hunt		0/0	0/0	0/0	0	0	0	0	0	0	0	0	0	1:06
40	Ashley Payton		0/1	0/1	0/0	0	0	0	0	0	0	0	0	0	4:19
41	Lindsey Embry		0/0	0/0	0/0	0	0	0	0	2	1	1	0	0	2:35
43	* Julie Leach		4/6	0/1	6/8	14	2	0	2	0	0	5	0	0	15:05
44	Janna Whittaker														DNP
5	Courtney Albin														DNP
53	Kirsten Barnwell														DNP
	Team						3	0	3						
	<b>Totals</b>		<b>9/25</b>	<b>2/10</b>	<b>6/9</b>	<b>26</b>	<b>5</b>	<b>11</b>	<b>16</b>	<b>5</b>	<b>4</b>	<b>12</b>	<b>0</b>	<b>7</b>	<b>80</b>
	<b>Total FG</b>		1st Half	9/25	36.0%	2nd Half	0/0	0.00%	Game	9/25	36.0%				
	<b>3 PT FG</b>		1st Half	2/10	20.0%	2nd Half	0/0	0.00%	Game	2/10	20.0%				
	<b>Free Throws</b>		1st Half	6/9	66.7%	2nd Half	0/0	0.00%	Game	6/9	66.7%				

Home: South Laurel Cardinals

##	Name	P	FG	3 Pt	FT	PTS	ORB	DRB	TR	PF	AST	TO	BS	ST	MIN
4	* Whitney Smith		1/6	0/1	0/0	2	0	0	0	0	1	2	0	0	14:29
10	* Mallory Jones		1/5	0/2	0/0	2	0	0	0	2	4	1	0	0	12:38
12	Makenzie McWhorter														DNP
20	Lauren Wombles		3/4	0/0	0/1	6	1	1	2	0	0	1	0	0	9:00
21	Jamie Wyatt														DNP
22	Johnna Sizemore														DNP
23	* Taran Johnson		4/6	0/1	1/1	9	1	6	7	2	0	1	0	0	15:38
32	Devon Burchette		1/3	0/0	0/0	2	2	3	5	2	0	2	0	1	12:25
35	Kayla Valentine		0/0	0/0	0/0	0	0	0	0	0	0	0	0	0	0:22
40	* Amber Neace		4/6	0/0	0/0	8	1	2	3	0	2	4	0	1	13:14
43	Kayla Baker														DNP
54	* Brittany Turner		0/0	0/0	0/0	0	0	1	1	2	0	2	0	1	2:14
	Team						1	0	1						
	<b>Totals</b>		<b>14/30</b>	<b>0/4</b>	<b>1/2</b>	<b>29</b>	<b>6</b>	<b>13</b>	<b>19</b>	<b>8</b>	<b>7</b>	<b>13</b>	<b>0</b>	<b>3</b>	<b>80</b>
	<b>Total FG</b>		1st Half	14/30	46.7%	2nd Half	0/0	0.00%	Game	14/30	46.7%				
	<b>3 PT FG</b>		1st Half	0/4	0.00%	2nd Half	0/0	0.00%	Game	0/4	0.00%				
	<b>Free Throws</b>		1st Half	1/2	50.0%	2nd Half	0/0	0.00%	Game	1/2	50.0%				

	OHIO	SL		OHIO	SL		OHIO	SL
Free Throw Pts	6	1	3Pt Points	6	0	Pts/Possession	0.72	0.78
Pts off Turnovers	14	6	2nd Chance Points	4	2	Pts off Bench	0	8
Total Rebounds	16	19	Team Rebounds	3	1	Dead Ball Reb	1	0
Off Rebound %	27.8	35.3	Def Rebound %	64.7	72.2	Total Rebound %	45.7	54.3
Technical Fouls	OHIO	None						
	SL	None						
Officials	Sherianne Shuey, Kirk Hudson, Linda Strong							

	Qtr 1	Qtr 2	Qtr 3	Qtr 4	OT 1	OT 2	OT 3	OT 4	Total
Ohio County Lady Eagles	9	17	0	0	0	0	0	0	26
South Laurel Cardinals	15	14	0	0	0	0	0	0	29

2005 HOUCHENS INDUSTRIES/KHSAA GIRLS' SWEET 16 - Play by Play Report - Period: 3 (pg 1)

South Laurel Cardinals vs. Ohio County Lady Eagles

Date: 03/23/2005 Time: 6:30 pm CST Site: Diddle Arena-Bowling Green, KY Attendance: N

Name	Action	Action	Score	Clock	Diff	Name	Action	Action
				3 8:00		L Goff	Leave Game	
				3 8:00		S Schroader	Leave Game	
				3 8:00		K McDaniel	Leave Game	
				3 8:00		A Payton	Leave Game	
				3 8:00		L Goff	Enter Game	for J Leach
				3 8:00		E Adams	Enter Game	for L Goff
				3 8:00		L Goff	Enter game	
				3 8:00		K McDaniel	Enter game	
				3 8:00		A Critchelow	Enter game	
				3 8:00		J Leach	Enter game	
W Smith	Leave Game			3 8:00				
L Wombles	Leave Game			3 8:00				
T Johnson	Leave Game			3 8:00				
D Burchette	Leave Game			3 8:00				
W Smith	Enter Game	for A Neace		3 8:00				
M Jones	Enter game			3 8:00				
T Johnson	Enter game			3 8:00				
A Neace	Enter game			3 8:00				
B Turner	Enter game			3 8:00				
			29-28	3 7:32	+1	J Leach	Layup Made	
B Turner	FT Made		30-28	3 7:21	+2	K McDaniel	Personal Foul	
B Turner	FT Made		31-28	3 7:21	+3			
				3 7:08		J Leach	FG Attempt	E Adams Off Reb
			31-30	3 7:05	+1	E Adams	Putback Made	
M Jones	Offensive Foul			3 6:58				
M Jones	Turnover			3 6:58				
				3 6:58		J Leach	Charge Taken	
				3 6:41		K McDaniel	3Pt Attempt	OHIO Off Reb
				3 6:36		L Goff	Turnover	(Bad Pass)
T Johnson	Steal			3 6:35				
A Neace	FG Attempt			3 6:30		OHIO	Def Rebound	
SL	Partial Time Out			3 6:29				
			31-32	3 6:17	-1 (L1)	A Critchelow	Layup Made	J Leach Assist
T Johnson	FG Made	M Jones Assist	33-32	3 6:03	+1 (L2)			
T Johnson	Def Rebound			3 5:55		L Goff	Layup Att	
T Johnson	FG Attempt	B Turner Off Reb		3 5:45				
B Turner	Putback Made		35-32	3 5:43	+3			
T Johnson	Block			3 5:25		K McDaniel	FG Attempt	OHIO Off Reb
A Neace	Personal Foul			3 5:13				
				3 5:13		L Goff	Leave Game	
				3 5:13		S Schroader	Enter Game	for A Critchelow
				3 5:13		K Hunt	Enter game	
			35-33	3 5:13	+2	J Leach	FT Made	
				3 5:13		J Leach	FT Attempt	E Adams Off Reb
				3 5:11		E Adams	Putback Att	OHIO Off Reb
				3 5:09		L Embry	Enter Game	for J Leach
A Neace	Def Rebound			3 5:05		E Adams	FG Attempt	
B Turner	FG Attempt			3 4:49		OHIO	Def Rebound	
				3 4:46		K McDaniel	Leave Game	
				3 4:46		L Goff	Enter Game	for K Hunt
				3 4:46		J Leach	Enter game	
D Burchette	Enter Game	for A Neace		3 4:46				
L Wombles	Enter Game	for B Turner		3 4:46				
				3 4:32		L Embry	Turnover	(Bad Pass)
				3 4:32		K Hunt	Enter Game	for L Goff
D Burchette	Offensive Foul			3 4:22				
D Burchette	Turnover			3 4:22				
				3 4:22		E Adams	Leave Game	
				3 4:22		S Schroader	Leave Game	
				3 4:22		K Hunt	Leave Game	
				3 4:22		L Embry	Leave Game	



2005 HOUCHENS INDUSTRIES/KHSAA GIRLS' SWEET 16 - Play by Play Report - Period: 3 (pg 2)

South Laurel Cardinals vs. Ohio County Lady Eagles

Date: 03/23/2005 Time: 6:30 pm CST Site: Diddle Arena-Bowling Green, KY Attendance: N

Name	Action	Action	Score	Clock	Diff	Name	Action	Action
				3 4:22		A Critchelow	Enter Game	for J Leach
				3 4:22		K McDaniel	Enter game	
				3 4:22		A Payton	Enter game	
				3 4:22		J Leach	Enter game	
				3 4:22		L Goff	Enter game	
			35-35	3 4:08	(T1)	J Leach	FG Made	K McDaniel Assist
L Wombles	FG Attempt			3 3:56		J Leach	Def Rebound	
				3 3:45		J Leach	Turnover	(Traveling)
W Smith	Leave Game			3 3:45				
A Neace	Enter Game	for D Burchette		3 3:45				
B Turner	Enter game			3 3:45				
				3 3:45		L Embry	Enter Game	for A Payton
				3 3:45		A Critchelow	Leave Game	
				3 3:45		E Adams	Enter Game	for J Leach
				3 3:45		K Hunt	Enter game	
M Jones	Turnover	(Bad Pass)		3 3:36				
				3 3:22		OHIO	Partial Time Out	
				3 3:22		K Hunt	Leave Game	
				3 3:22		A Critchelow	Enter Game	for L Embry
				3 3:22		J Leach	Enter game	
B Turner	Def Rebound			3 3:18		L Goff	3Pt Attempt	
T Johnson	FG Attempt			3 3:06		K McDaniel	Def Rebound	
B Turner	Def Rebound			3 2:55		J Leach	FG Attempt	
T Johnson	Layup Made	M Jones Assist	37-35	3 2:48	+2			
A Neace	Def Rebound			3 2:33		A Critchelow	FG Attempt	
	Official Time Out			3 2:27			Official Time Out	
				3 2:27		S Schroeder	Enter Game	for A Critchelow
B Turner	Turnover	(Violation)		3 2:26				
				3 2:26		A Payton	Enter Game	for E Adams
A Neace	Def Rebound			3 2:07		K McDaniel	3Pt Attempt	
L Wombles	Layup Made	A Neace Assist	39-35	3 1:59	+4			
				3 1:47		S Schroeder	Leave Game	
				3 1:47		K McDaniel	Leave Game	
				3 1:47		E Adams	Enter Game	for A Payton
				3 1:47		A Critchelow	Enter game	
				3 1:47		L Embry	Enter game	
A Neace	Personal Foul			3 1:44				
A Neace	Block			3 1:32		A Critchelow	FG Attempt	OHIO Off Reb
				3 1:32		K McDaniel	Enter Game	for L Embry
				3 1:20		A Critchelow	Turnover	(Traveling)
				3 1:20		L Goff	Leave Game	
				3 1:20		K Hunt	Enter Game	for K McDaniel
				3 1:20		L Embry	Enter game	for A Critchelow
				3 1:20		S Schroeder	Enter game	
				3 1:11		J Leach	Personal Foul	
A Neace	Layup Made		41-35	3 0:56	+6			
SL	Def Rebound			3 0:45		J Leach	3Pt Attempt	
W Smith	Enter Game	for M Jones		3 0:44				
				3 0:44		K McDaniel	Enter Game	for J Leach
A Neace	Turnover	(Bad Pass)		3 0:28				
				3 0:28		E Adams	Leave Game	
				3 0:28		S Schroeder	Leave Game	
				3 0:28		K Hunt	Leave Game	
				3 0:28		L Goff	Enter Game	for L Embry
				3 0:28		A Critchelow	Enter game	
				3 0:28		A Payton	Enter game	
				3 0:28		J Leach	Enter game	
			41-37	3 0:10	+4	J Leach	FG Made	L Goff Assist
				3 0:10		OHIO	Time Out	
				3 0:10		L Goff	Leave Game	
				3 0:10		A Critchelow	Leave Game	
				3 0:10		K McDaniel	Leave Game	

2005 HOUCHEMENS INDUSTRIES/KHSAA GIRLS' SWEET 16 - Play by Play Report - Period: 3 (pg 3)

South Laurel Cardinals vs. Ohio County Lady Eagles

Date: 03/23/2005 Time: 6:30 pm CST Site: Diddle Arena-Bowling Green, KY Attendance: N

Name	Action	Action	Score	Clock	Diff	Name	Action	Action
				3 0:10		A Payton	Leave Game	
				3 0:10		E Adams	Enter Game	for J Leach
				3 0:10		S Schroeder	Enter game	
				3 0:10		K Hunt	Enter game	
				3 0:10		L Embry	Enter game	
				3 0:10		A Critchelow	Enter game	
M Jones	Enter Game	for A Neace		3 0:10				
L Wombles	FG Made		43-37	3 0:05	+6			

End of Period Summary Cardinals 43 Lady Eagles 37

Largest Lead: Cardinals 23 Lady Eagles 14 (9 pts)

Lead in Period: Cardinals 41 Lady Eagles 35 (6 pts)

5 for 4 oppo pts

1 for 2 pts

6/11 for 54.5 %

2/2 for 100 %

Turnovers

2nd Chances

Field Goals

Free Throws

Lead Changes: 2 Ties: 1

Lead Changes: 2 Ties: 1 (this period)

4 for 2 oppo pts

6 for 2 pts

5/17 for 29.4 %

1/2 for 50.0 %

2005 HOUCHENS INDUSTRIES/KHSAA GIRLS' SWEET 16 - Play by Play Report - Period: 4 (pg 1)

South Laurel Cardinals vs. Ohio County Lady Eagles

Date: 03/23/2005 Time: 6:30 pm CST Site: Diddle Arena-Bowling Green, KY Attendance: N

Name	Action	Action	Score	Clock	Diff	Name	Action	Action
				4 8:00		L Goff	Enter Game	for S Schroader
				4 8:00		K McDaniel	Enter Game	for K Hunt
				4 8:00		J Leach	Enter game	
L Wombles	Leave Game			4 8:00				
				4 8:00		L Embry	Leave Game	
A Neace	Enter game			4 8:00				
B Turner	FG Made	M Jones Assist	45-37	4 7:43	+8			
B Turner	Block	T Johnson Def Reb		4 7:37		E Adams	FG Attempt	
T Johnson	FT Made		46-37	4 7:28	+9	A Critchelow	Personal Foul	
T Johnson	FT Attempt			4 7:28		OHIO	Def Rebound	
				4 6:58	+7	A Critchelow	FG Made	J Leach Assist
A Neace	FG Attempt			4 6:51		J Leach	Def Rebound	
			46-42	4 6:39	+4	L Goff	3Pt Made	A Critchelow Assist
SL	Partial Time Out			4 6:23				
				4 6:10		E Adams	Personal Foul	
W Smith	Leave Game			4 6:10				
L Wombles	Enter Game	for B Turner		4 6:10				
D Burchette	Enter game			4 6:10				
A Neace	FT Attempt	SL Deadball Reb		4 6:10				
A Neace	FT Attempt			4 6:10		J Leach	Def Rebound	
M Jones	Def Rebound			4 6:03		A Critchelow	FG Attempt	
				4 5:59		E Adams	Leave Game	
				4 5:59		A Critchelow	Leave Game	
				4 5:59		S Schroader	Enter Game	for K McDaniel
				4 5:59		K Hunt	Enter game	
				4 5:59		L Embry	Enter game	for L Goff
				4 5:59		E Adams	Enter game	
				4 5:53		L Embry	Personal Foul	
				4 5:50		J Leach	Personal Foul	
B Turner	Enter Game	for D Burchette		4 5:50				
				4 5:50		E Adams	Leave Game	
				4 5:50		S Schroader	Leave Game	
				4 5:50		K Hunt	Leave Game	
				4 5:50		L Goff	Enter Game	for L Embry
				4 5:50		A Critchelow	Enter game	
				4 5:50		K McDaniel	Enter game	
				4 5:50		A Payton	Enter game	
T Johnson	FT Made		47-42	4 5:50	+5			
T Johnson	FT Made		48-42	4 5:50	+6			
				4 5:39		A Critchelow	3Pt Attempt	A Payton Off Reb
B Turner	Block	T Johnson Def Reb		4 5:38		A Payton	Putback Att	
T Johnson	Turnover			4 5:25				
				4 5:25		A Critchelow	Steal	
				4 5:15		J Leach	Turnover	(Fumble)
				4 5:01		L Embry	Enter Game	for A Payton
A Neace	FG Attempt			4 4:57		L Embry	Def Rebound	
L Wombles	Personal Foul			4 4:48				
				4 4:48		L Goff	Leave Game	
				4 4:48		S Schroader	Enter Game	for K McDaniel
				4 4:48		K Hunt	Enter game	
			48-43	4 4:48	+5	J Leach	FT Made	
			48-44	4 4:48	+4	J Leach	FT Made	
				4 4:48		E Adams	Enter Game	for J Leach
B Turner	Turnover	(Bad Pass)		4 4:37				
				4 4:36		E Adams	Steal	
A Neace	Personal Foul			4 4:34				
				4 4:34		E Adams	Leave Game	
				4 4:34		A Critchelow	Leave Game	
				4 4:34		S Schroader	Leave Game	
				4 4:34		K Hunt	Leave Game	
				4 4:34		L Embry	Leave Game	

2005 HOUCHEMS INDUSTIRES/KHSAA GIRLS' SWEET 16 - Play by Play Report - Period: 4 (pg 2)

South Laurel Cardinals vs. Ohio County Lady Eagles

Date: 03/23/2005 Time: 6:30 pm CST Site: Diddle Arena-Bowling Green, KY Attendance: N

Name	Action	Action	Score	Clock	Diff	Name	Action	Action
D Burchette	Enter Game	for B Turner		4 4:34				
				4 4:34		K McDaniel	Enter game	
				4 4:34		J Leach	Enter game	
				4 4:34		A Payton	Enter game	
				4 4:34		L Goff	Enter game	
				4 4:34		A Critchelow	Enter game	
SL	Time Out			4 4:34				
W Smith	Enter Game	for L Wombles		4 4:34				
W Smith	Def Rebound			4 4:19		J Leach	FG Attempt	
				4 4:17		L Embry	Enter Game	for A Payton
W Smith	FG Made	M Jones Assist	50-44	4 4:10	+6			
D Burchette	Def Rebound			4 4:03		J Leach	FG Attempt	
A Neace	FG Made	T Johnson Assist	52-44	4 3:51	+8			
A Neace	Def Rebound			4 3:35		K McDaniel	3Pt Attempt	
A Neace	Turnover	(Bad Pass)		4 3:30				
				4 3:29		L Goff	FG Attempt	J Leach Off Reb
			52-46	4 3:28	+6	J Leach	Putback Made	
A Neace	Personal Foul			4 3:28				
D Burchette	Leave Game			4 3:28				
L Wombles	Enter Game	for A Neace		4 3:28				
B Turner	Enter game			4 3:28		E Adams	Enter Game	for K McDaniel
			52-47	4 3:28	+5	J Leach	FT Made	
M Jones	Offensive Foul			4 3:26				
M Jones	Turnover			4 3:26				
				4 3:26		A Critchelow	Charge Taken	
				4 3:26		K McDaniel	Enter Game	for L Embry
				4 3:00				
T Johnson	Block	L Wombles Def Reb		4 3:00		J Leach	FG Attempt	
T Johnson	FG Made	L Wombles Assist	54-47	4 2:46	+7			
B Turner	Def Rebound			4 2:39		E Adams	FG Attempt	
				4 2:36		A Critchelow	Personal Foul	
	Official Time Out			4 2:36			Official Time Out	
				4 2:36		E Adams	Leave Game	
				4 2:36		S Schroader	Enter Game	for K McDaniel
				4 2:36		A Payton	Enter game	
M Jones	FT Made		55-47	4 2:36	+8			
M Jones	FT Made		56-47	4 2:36	+9			
J Sizemore	Enter Game	for M Jones		4 2:36				
B Turner	Personal Foul			4 2:08				
L Wombles	Leave Game			4 2:08				
M Jones	Enter Game	for J Sizemore		4 2:08				
A Neace	Enter game			4 2:08				
				4 2:08		S Schroader	Leave Game	
				4 2:08		K McDaniel	Enter Game	for A Payton
				4 2:08		L Embry	Enter game	
			56-48	4 2:08	+8	J Leach	FT Made	
			56-49	4 2:08	+7	J Leach	FT Made	
M Jones	Turnover	(Bad Pass)		4 2:01				
				4 1:58		K McDaniel	Turnover	(Bad Pass)
T Johnson	Layup Made		58-49	4 1:52	+9			
B Turner	Personal Foul			4 1:37				
				4 1:37		K McDaniel	FT Attempt	OHIO Deadball Reb
T Johnson	Def Rebound			4 1:37		K McDaniel	FT Attempt	
T Johnson	FG Attempt			4 1:26		OHIO	Def Rebound	(Dead Ball Reb)
B Turner	Personal Foul			4 1:25				
				4 1:25		E Adams	Enter Game	for K McDaniel
L Wombles	Enter Game	for B Turner		4 1:25				
				4 1:25		L Goff	Leave Game	
				4 1:25		S Schroader	Enter Game	for J Leach
				4 1:25		K Hunt	Enter game	
			58-50	4 1:25	+8	A Critchelow	FT Made	

2005 HOUCHEM INDUSTRIES/KHSAA GIRLS' SWEET 16 - Play by Play Report - Period: 4 (pg 3)

South Laurel Cardinals vs. Ohio County Lady Eagles

Date: 03/23/2005 Time: 6:30 pm CST Site: Diddle Arena-Bowling Green, KY Attendance: N

Name	Action	Action	Score	Clock	Diff	Name	Action	Action
SL	Def Rebound			4 1:25		A Critchelow	FT Attempt	
				4 1:21		J Leach	Enter Game	for A Critchelow
A Neace	Layup Made	M Jones Assist	60-50	4 1:10	+10			
M Jones	Turnover			4 1:05		K Hunt	Turnover	(Double Dribble)
				4 0:52				
				4 0:48		L Embry	Turnover	(Bad Pass)
				4 0:33		E Adams	Personal Foul	
				4 0:33		S Schroader	Leave Game	
				4 0:33		K Hunt	Leave Game	
				4 0:33		L Goff	Enter Game	for L Embry
				4 0:33		A Critchelow	Enter game	
M Jones	FT Made		61-50	4 0:33	+11	A Payton	Enter game	
M Jones	FT Attempt			4 0:33		J Leach	Def Rebound	
				4 0:21		A Payton	3Pt Attempt	E Adams Off Reb
			61-52	4 0:18	+9	E Adams	Putback Made	
				4 0:16		OHIO	Time Out	
				4 0:16		L Goff	Leave Game	
				4 0:16		K Hunt	Enter Game	for A Payton
				4 0:16		L Embry	Enter game	
SL	Time Out			4 0:16				
				4 0:13		K Hunt	Personal Foul	
				4 0:13		E Adams	Leave Game	
				4 0:13		A Critchelow	Leave Game	
				4 0:13		L Embry	Leave Game	
				4 0:13		A Hamilton	Enter Game	for J Leach
				4 0:13		S Schroader	Enter game	
				4 0:13		J Whittaker	Enter game	
				4 0:13		J Whittaker	Enter game	
A Neace	FT Attempt			4 0:13		A Hamilton	Def Rebound	

End of Period Summary Cardinals 61 Lady Eagles 52

Largest Lead: Cardinals 61 Lady Eagles 50 (11 pts)

Lead in Period: Cardinals 61 Lady Eagles 50 (11 pts)

6 for 3 oppo pts

0 for 0 pts

6/9 for 66.7 %

6/11 for 54.5 %

Turnovers

2nd Chances

Field Goals

Free Throws

Lead Changes: 2 Ties: 1

Lead Changes: 0 Ties: 0 (this period)

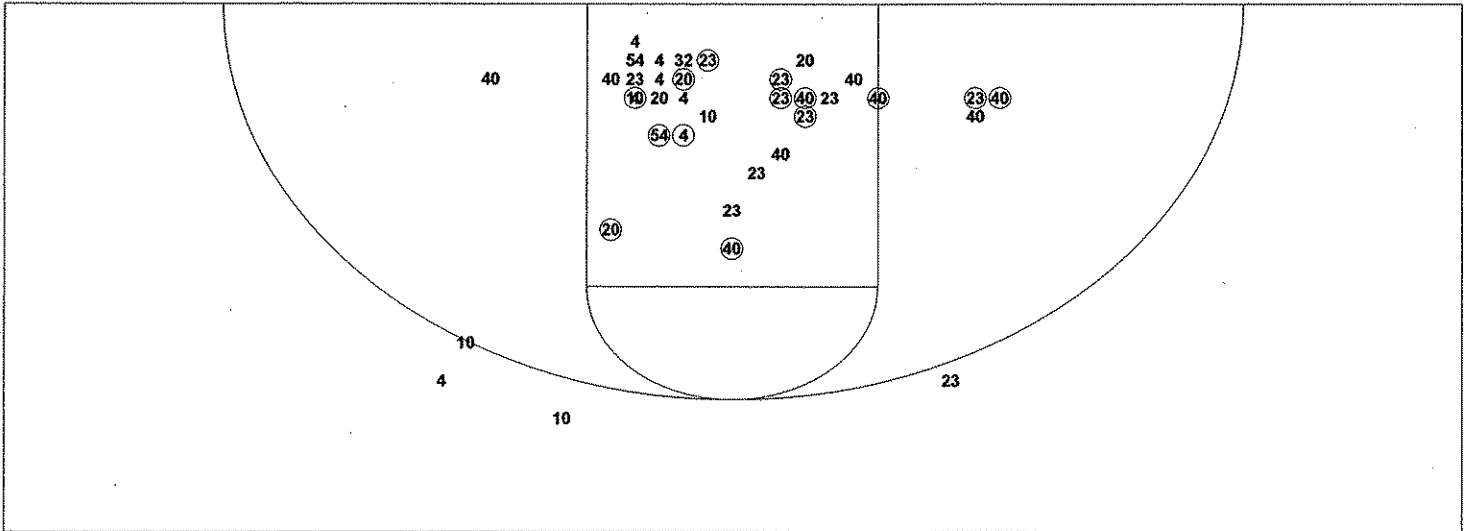
4 for 3 oppo pts

3 for 5 pts

4/15 for 26.7 %

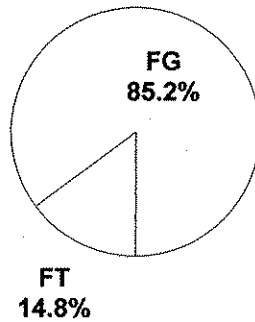
6/9 for 66.7 %

2005 HOUCHENS INDUSTRIES/KHSAA GIRLS' SWEET 16 - TEAM SHOT CHART for the South Laurel Cardinals  
 South Laurel Cardinals vs. Ohio County Lady Eagles  
 DATE: 03/23/2005 TIME: 6:30 pm CST SITE: Diddle Arena-Bowling Green, KY

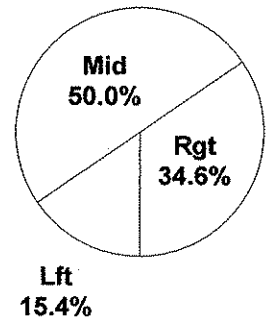


Shot Summary	M/A	%	PTS
3Pt FG	0/4	0.0%	0
2Pt FG	26/46	56.5%	52
Layups - L	4/4	100.0%	8
Layups - R	7/7	100.0%	14
Dunks	0/0	0.0%	0
Putbacks	1/2	50.0%	2
Overall Shooting	26/50	52.0%	52
Free Throws	9/15	60.0%	9
Total Points			61

Scoring Distribution

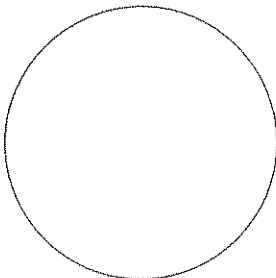


Scoring Locations

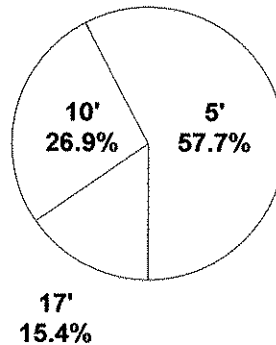


By Period	FG	FGA	FG%	3Pt	3PA	3P%	FT	FTA	FT%	PTS	ORB	DRB	TR	PF	AST	TO	BS	ST	P/S
1st Period	7	14	50.0	0	1	0.00	1	1	100	15	2	7	9	4	3	7	0	3	1.07
2nd Period	7	16	43.8	0	3	0.00	0	1	0.00	14	4	6	10	4	4	6	0	0	0.88
3rd Period	6	11	54.5	0	0	0.00	2	2	100	14	1	7	8	4	3	5	2	1	1.17
4th Period	6	9	66.7	0	0	0.00	6	11	54.5	18	0	10	10	7	5	6	3	0	1.29
Game	26	50	52.0	0	4	0.00	9	15	60.0	61	7	30	37	19	15	24	5	4	1.07

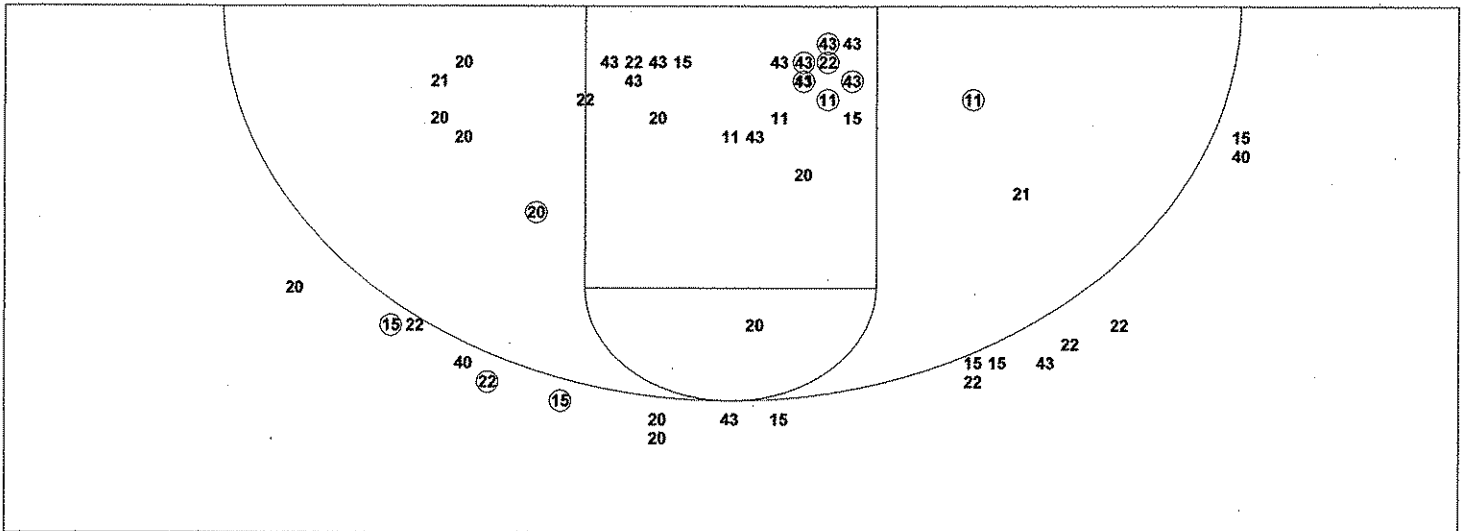
Scoring Breakdown



Scoring Range

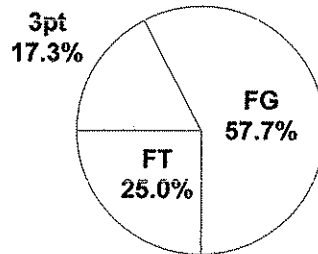


**2005 HOUCHENS INDUSTRIES/KHSAA GIRLS' SWEET 16 - TEAM SHOT CHART for the Ohio County Lady Eagles**  
**South Laurel Cardinals vs. Ohio County Lady Eagles**  
**DATE: 03/23/2005 TIME: 6:30 pm CST SITE: Diddle Arena-Bowling Green, KY**

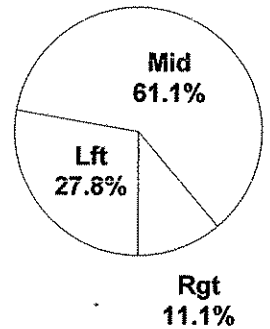


Shot Summary	M/A	%	PTS
3Pt FG	3/18	16.7%	9
2Pt FG	15/39	38.5%	30
Layups - L	1/1	100.0%	2
Layups - R	1/2	50.0%	2
Dunks	0/0	0.0%	0
Putbacks	5/7	71.4%	10
Overall Shooting	18/57	31.6%	39
Free Throws	13/20	65.0%	13
Total Points			52

Scoring Distribution

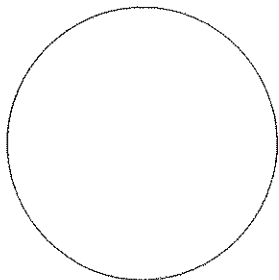


Scoring Locations



By Period	FG	FGA	FG%	3Pt	3PA	3P%	FT	FTA	FT%	PTS	ORB	DRB	TR	PF	AST	TO	BS	ST	P/S
1st Period	3	13	23.1	0	6	0.00	3	4	75.0	9	3	5	8	2	1	7	0	3	0.60
2nd Period	6	12	50.0	2	4	50.0	3	5	60.0	17	2	6	8	3	3	5	0	4	1.21
3rd Period	5	17	29.4	0	4	0.00	1	2	50.0	11	6	4	10	2	3	4	0	0	0.61
4th Period	4	15	26.7	1	4	25.0	6	9	66.7	15	3	6	9	7	2	4	0	2	0.79
Game	18	57	31.6	3	18	16.7	13	20	65.0	52	14	21	35	14	9	20	0	9	0.78

Scoring Breakdown



Scoring Range

